

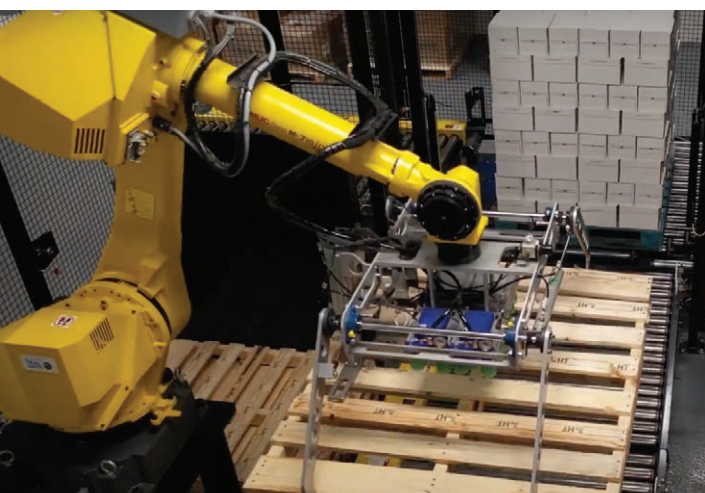
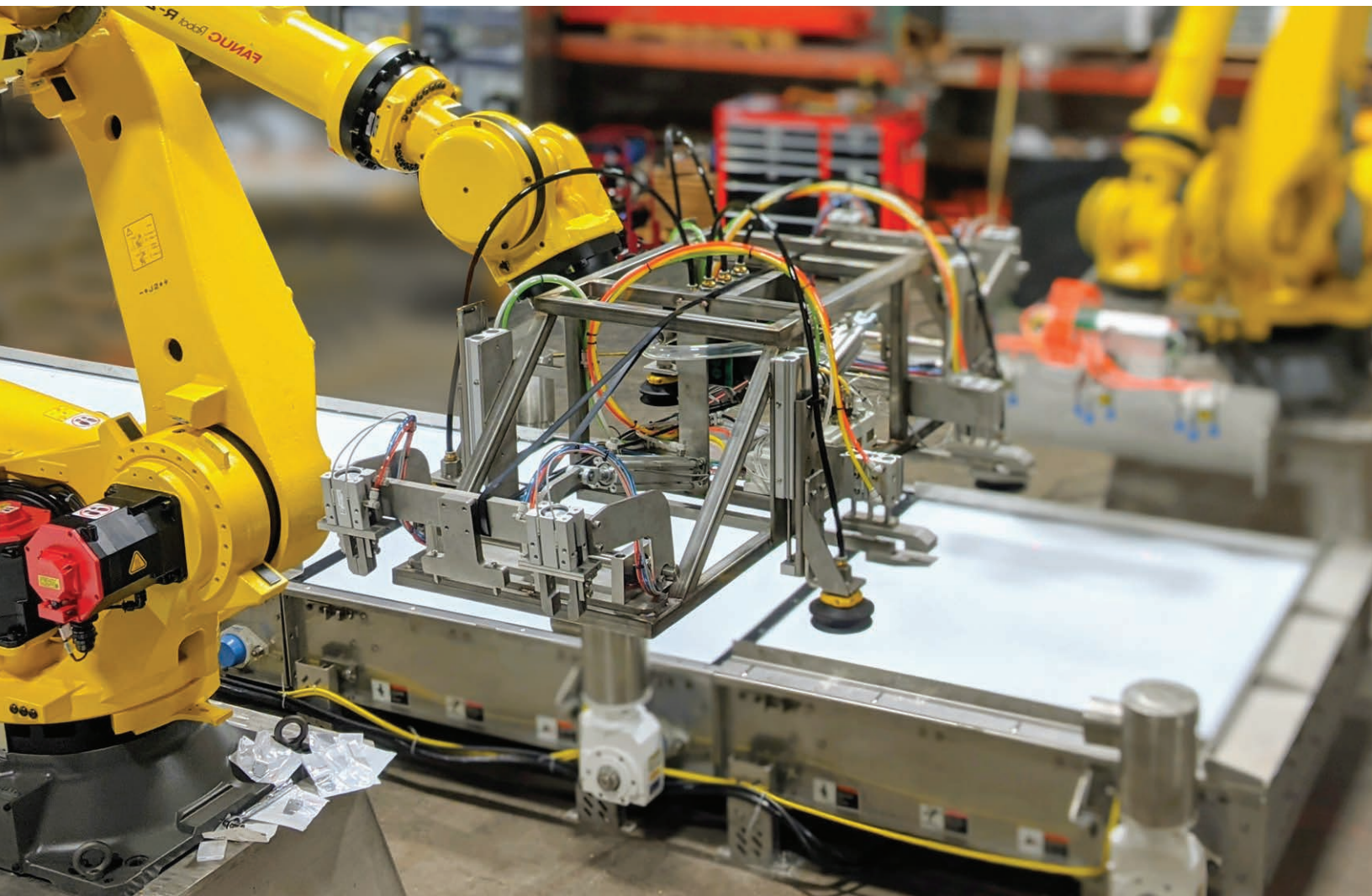


Engineered Project and Systems Integrator

Stac is driven by a passion to provide the best products, service and installation for your material handling needs. We specialize in Robotics, Conveyor, Sortation Systems and Material Handling Projects that create a safe, economical and efficient solution for you.

ROBOTICS

With over a decade of experience, our robotics team is uniquely qualified to design, engineer, install and train your staff on robotics solutions. Specializing in application and process development using industrial robots, our experience in PLC Control, HMI Design, 3D Modeling and electrical prints, can help you to reduce cost and increase overall reliability, quality and productivity.



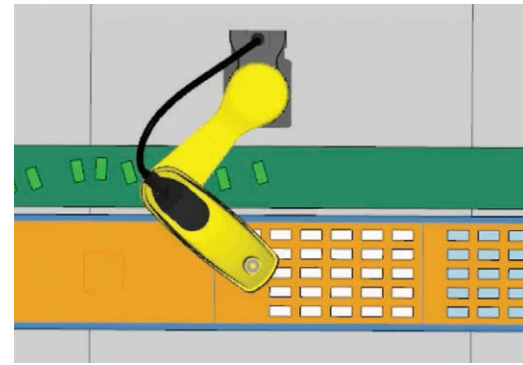
SERVICES

- PLC Programming
- HMI Development
- Robot Programming
- Robot Cell Integration
- Vision Systems
- Electrical Design and Prints
- Panel Building



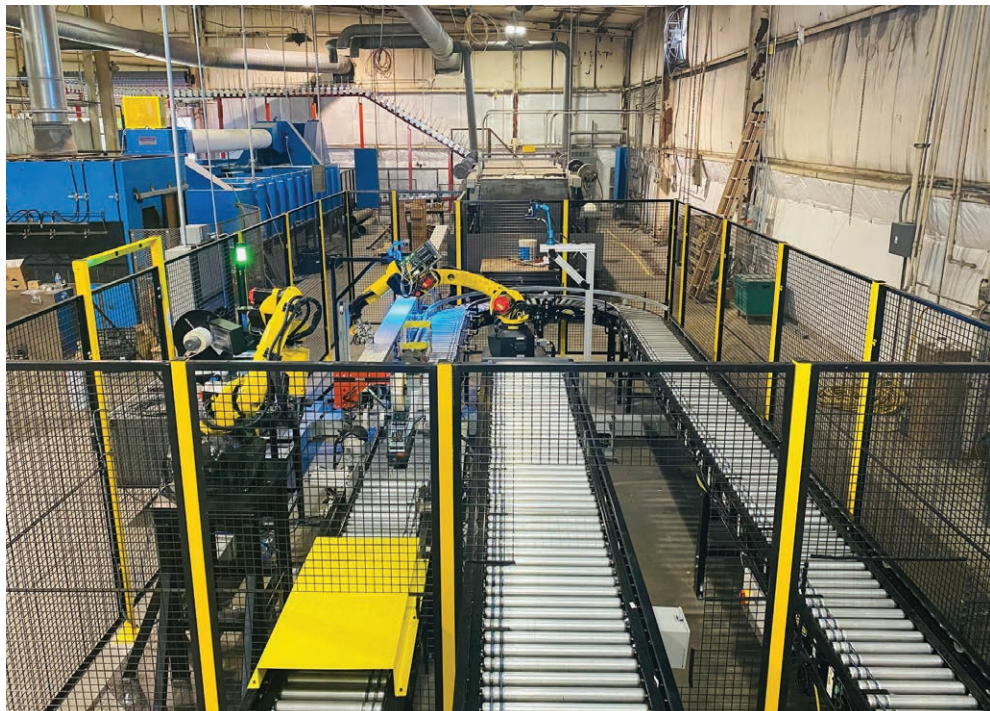
Stac is an Authorized Service Integrator for Fanuc Robotics

LEARN MORE ABOUT OUR SOLUTIONS AT STACMH.COM



APPLICATIONS

- Machine Tending
- Heavy Lifting
- Areas with Repetitive Motion
- High Labor Costs (workers comp, healthcare, benefits)
- Pick and Place
- Palletizing
- Product Orientation
- High Turn-over positions
- Pick and Place
- Positions that require quality, precision or accuracy
- Positions which require steady, reliable output



OUR EXPERT INSTALLERS CAN HANDLE FULL ELECTRICAL AND MECHANICAL INSTALLATION OF THE MOST COMPLEX PROJECTS.

CONVEYOR SOLUTIONS



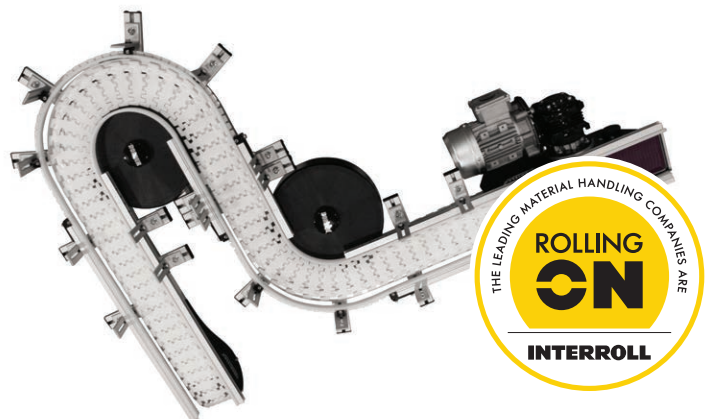
INVESTING IN YOUR FACILITY
CAN SAVE YOU MONEY

BENEFITS

- Greater Speeds + Cycle Times
- Increased Safety
- Reduced Handling + Palletizing
- Productivity Gains
- Better Travel Organization



Accumulation



LEARN MORE ABOUT OUR SOLUTIONS AT STACMH.COM



Accumulation

REDUCED HANDLING AND INCREASED EFFICIENCY

Let Stac Engineering design and implement your next conveyor system. Whether you need powered, straight run conveyors or multi-level sortation systems, we have the solutions you are searching for. Our clients achieve higher throughputs, cycle times, reduced handling, and ergonomic improvements by implementing powered system solutions.

Planning ahead just got easier, Stac conveyor systems are designed to be modular, allowing for future additions or reconfigurations.



Belt



Roller



Chain



Low Profile Belt



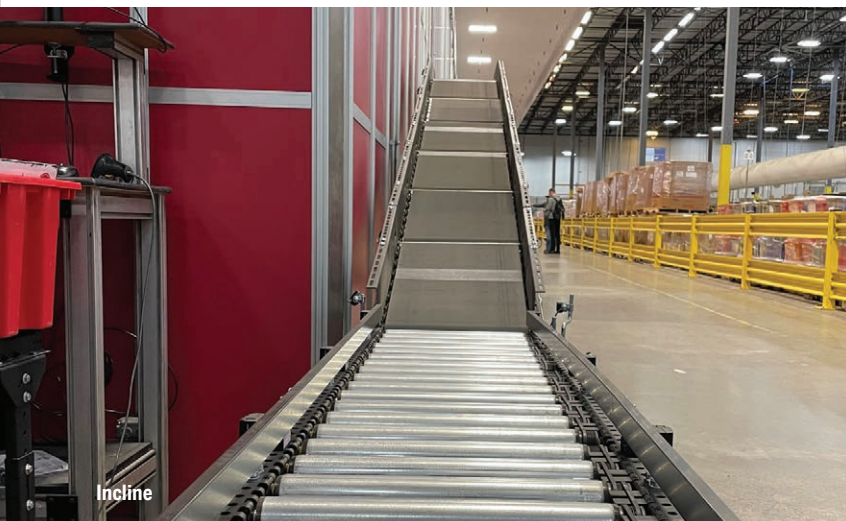
Plastic Belt



Vertical



Spiral Incline



Incline



Heavy Duty

OUR EXPERT INSTALLERS CAN HANDLE FULL ELECTRICAL AND MECHANICAL INSTALLATION OF THE MOST COMPLEX PROJECTS.



AMRs

AUTONOMOUS MOBILE ROBOTS



Increase safety and reliability regarding the transfer or storage of goods with an AMR. Stackers, tuggers, and low-profile tunnelers are ready to move and store the heaviest of loads. Smaller AMRs can assist in processing orders, decrease material touches and improve throughput. Each AMR solution is designed to improve efficiency and work around people. As you consider a solution, let Stac create your paths virtually, see your drop and pick-up stations, estimate your payback in time and cost before making an investment.





BENEFITS

- Easily re-calculate routes
- Utilize simple paths or complex PLC integrations
- 12-15 hours of continuous use
- Automatic charging stations
- Ability to transport anything



**UP TO 2,976 LB.
PAYLOAD CAPACITY**



**TRANSPORT
ANYTHING
ANYWHERE**

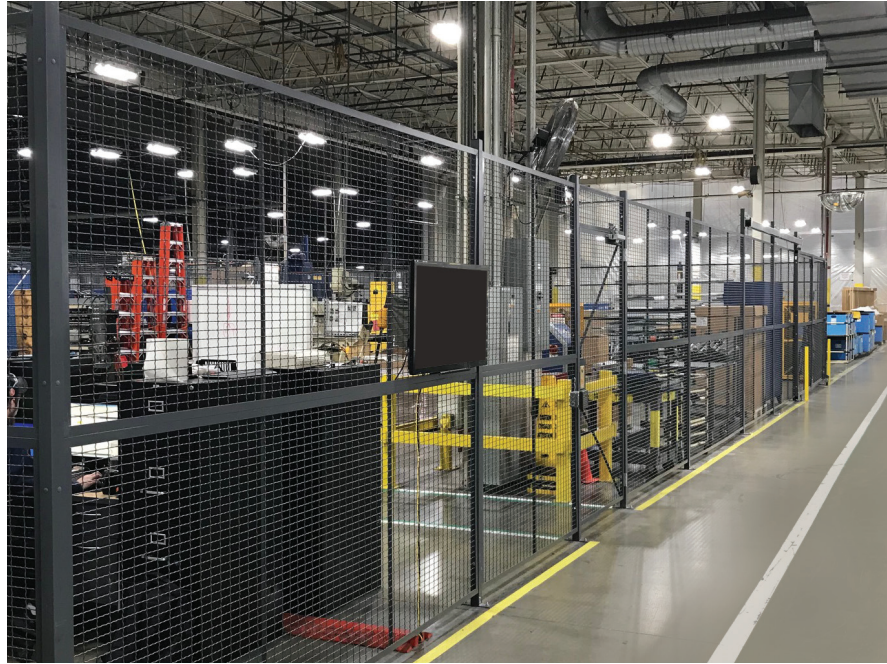
MIR
A BETTER WAY

VECNA
ROBOTICS



OUR EXPERT INSTALLERS CAN HANDLE FULL ELECTRICAL AND MECHANICAL INSTALLATION OF THE MOST COMPLEX PROJECTS.

GUARD RAIL+ WIRE PARTITIONS



SAFETY, SECURITY + SEPARATION

GUARD RAILING

Help protect your employees, products and your business with Guard Railing that keeps safety priority #1. Bolt-on or Lift Out options help streamline your facility flow, material protection and keep pedestrians separated from floor traffic. Powder coated in safety yellow and many quick ship custom sizes available.

WIRE PARTITIONS

We utilize all-welded, modular stacking systems that create simpler, more efficient partitions. Our partitions deliver a clean look while maintaining the ability to keep products secure and separated throughout your facility. Made of woven and welded wire that is paired with the heaviest assembly hardware in the industry, these partitions provide you the peace of mind that your area is secure. Options also include sheet metal, polycarbonate and welding curtains fully integrated into your solution.



HVLS HIGH VOLUME LOW SPEED FANS

Fans have direct drive motors and cost less than a dollar a day to operate. With a 15 year warranty, providing air movement benefits in summer and winter, popularity is sky rocketing as companies take advantage of heating and air cost savings. Better comfortability in manufacturing and distribution facilities improves productivity.

MEZZANINES

Utilization of vertical space directly leverages efficiencies that drive corporate profits. Storage and production cells are the most common uses for mezzanine systems. Mezzanines can be free standing, building supported, rack supported or shelving supported. These structures are custom made to exact customer specifications and often integrate conveyor systems, freight lifts and other automation investments to help deliver and receive product.



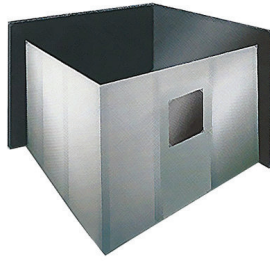
APPLICATIONS

- Assembly Areas
- Parts Departments
- Stock Rooms
- Locker Rooms
- Office Retail
- Restaurants
- Sports Complex
- Production Floor

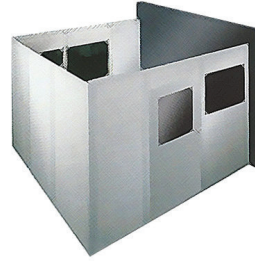
OUR EXPERT INSTALLERS CAN HANDLE FULL ELECTRICAL AND MECHANICAL INSTALLATION OF THE MOST COMPLEX PROJECTS.

MODULAR BUILDINGS

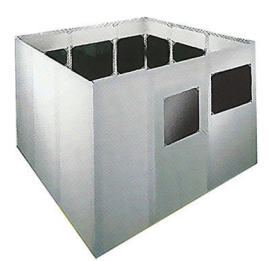
Stac has been a premier integration firm for the design and installation of modular structures. Pre-engineered buildings are manufactured specifically for your application. Common applications include facility offices, cold storage, environmental enclosures, break rooms and class 100-100,000 Clean Rooms.



2 Walls



3 Walls



4 Walls



CRANES + HOISTS

GORBEL
A CLASS ABOVE

Stac represents your leading Gorbelt crane and engineered lifting solutions integrator. Allow us to design your bridge, gantry, jib, i-beam and tramrail crane applications. Workstation lifting solutions are often responsible for significant reduction on back related lifting injuries in the manufacturing and distribution industries.

GORBEL ERGONOMIC LIFTING

Look to Gorbelt Ergonomic Lifting when you're looking for a turn-key, plug-and-play lifting solution. You get all the strength, precision, and speed of our patented G-Force® lifting technology, with the ability to lift and maneuver naturally, as if the device was an extension of your arms.



LEARN MORE ABOUT OUR SOLUTIONS AT STACMH.COM

STORAGE RACK

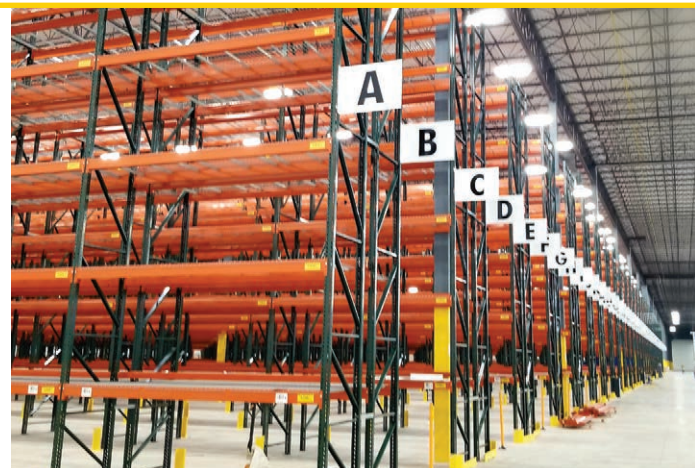
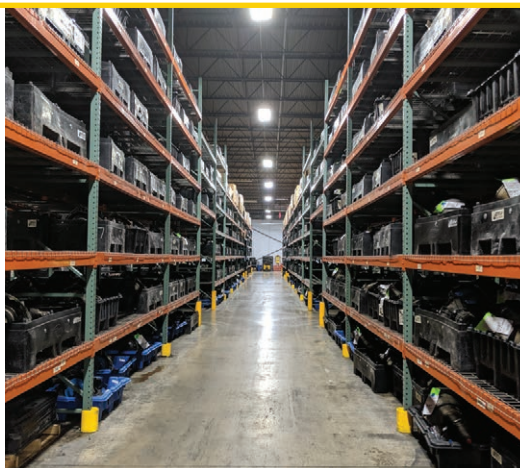
Innovative Storage Rack can change how your facility operates. We're ready to help guide you in the selection process for the best high density storage solution. Stac is here to support and consult on standard pallet racking layouts to the most sophisticated retrieval/storage systems needed to keep pace with today's demand and technology.

Taking down or moving rack? No problem, we also deconstruct existing rack and move into different locations and re-install or palletize and remove from your facility.



APPLICATIONS

- Standard Pallet Rack
- Structural
- Pallet Flow
- Carton Flow
- Push Back
- Die Storage
- Pick Module
- Cantilever
- Double Deep
- Drive IN/Drive Through
- Narrow Aisle
- Automated Storage and Retrieval



OUR EXPERT INSTALLERS CAN HANDLE FULL ELECTRICAL AND MECHANICAL INSTALLATION OF THE MOST COMPLEX PROJECTS.

"It is hard to find integrators who do what they say they are going to do, and do it right. You guys have and are done a day early."

Senior Engineering Manager, Advics Manufacturing

A Few of Our Customers



More About Stac

Stac designs, implements, and installs turnkey material handling solutions that deliver increased safety, productivity, and efficiency results. Established in 2004, our passion for integration has created a winning culture to provide automated and general material handling solutions that are on time and budget. Our integration capabilities and engineering background, position us for technical solutions involving and implementing today's technology in manufacturing and distribution for a better tomorrow.

"We will look out for your best interests and our history of customer service speaks for itself." Kim Schroeder, CEO



stacmh.com | 866.634.3040