



General Material Handling Capabilities

Stac is driven by a passion to provide the best products, service and installation for your material handling needs. We specialize in all things Material Handling. From your most complex projects down to basic storage and safety applications; we handle it all. Our goal is to drive a safe, economical, and efficient solution for your next material handling project.

PALLET RACK

The design and installation of racking can change the way your facility operates and flows. Stac will help guide you in rack selection for the best high density option while working to keep your costs low. We are here to support and consult on standard pallet racking layouts to the most sophisticated retrieval/storage systems needed to keep pace with today's demand and technology.

Taking down or moving rack? No problem, we also deconstruct existing rack and move into different locations and re-install or palletize and remove from your facility.



APPLICATIONS

- Standard Pallet Rack
- Structural
- Die Storage
- Pick Module
- Cantilever
- Double Deep
- Drive IN/Drive Through
- Narrow Aisle
- Shelving
- Automated Storage and Retrieval



LEARN MORE ABOUT OUR SOLUTIONS AT STACMH.COM

PALLET + CARTON FLOW

PALLET FLOW

Storage of materials generally costs up to **40% of logistics** and **7% of production costs**. Pallet flow systems offer a more compact storage option compared to traditional racking and shelving. Reducing lanes to a single load and unload side allows for elimination of aisles, minimizing floor space footprint by 50% and establishing a First-In First-Out basis. Lanes are gravity fed and contain magnetic braking systems that allow for pallet weights to range from 50 – 2760 lbs.

CARTON FLOW

Carton flow racks save time, space and money. Flow racks provide a First-In, First-Out basis of storage that keeps merchandise and products organized and easier to pick when compared to traditional shelving.

Carton Flow cells can be standalone cells brought line-side or they can consist of lanes to be placed inside existing pallet racking. Boxes, cases, metal, plastic containers, and even kegs can be stored inside carton flow systems.



Carton flow **reduces worker time** spent in the following areas:



50%
WALKING TIME



30%
PICKING TIME



10%
PART ID



OUR EXPERT INSTALLERS CAN HANDLE FULL ELECTRICAL AND MECHANICAL INSTALLATION OF THE MOST COMPLEX PROJECTS.

MEZZANINES

Utilization of vertical space directly leverages efficiencies that drive corporate profits. Storage and production cells are the most common uses for mezzanine systems. Mezzanines can be free standing, building supported, rack supported or shelving supported. These structures are custom made to exact customer specifications and often integrate conveyor systems, freight lifts and other automation investments to help deliver and receive product.



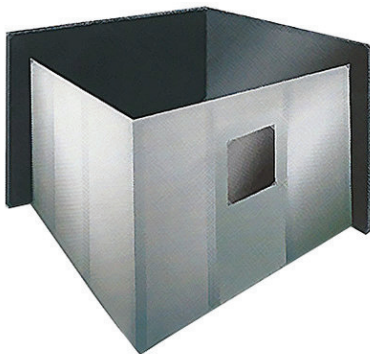
APPLICATIONS

- Assembly Areas
- Parts Departments
- Stock Rooms
- Locker Rooms
- Office Retail
- Restaurants
- Sports Complex
- Production Floor

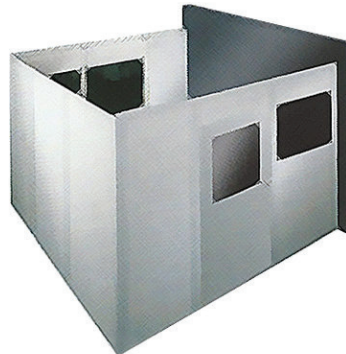


MODULAR BUILDINGS

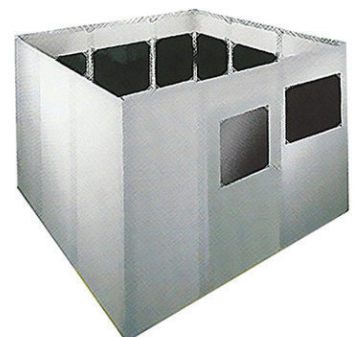
Stac has been a premier integration firm for the design and installation of modular structures. Pre-engineered buildings are manufactured specifically for your application. Common applications include facility offices, cold storage, environmental enclosures, break rooms and class 100-100,000 Clean Rooms.



2 Walls



3 Walls



4 Walls

OUR EXPERT INSTALLERS CAN HANDLE FULL ELECTRICAL AND MECHANICAL INSTALLATION OF THE MOST COMPLEX PROJECTS.

GRAVITY CONVEYORS

Not all conveyor systems need to involve powered solutions such as transfers, accumulation zones or belts. Many times, keeping it simple with a gravity conveyor, is the best solution. A gravity conveyor is an **unpowered conveyor** that uses the force of gravity to move materials over a downward path.

Gravity conveyors can handle full pallet loads, down to small boxes and totes. Lineside parts delivery, slower processes, cell work, and First-In First-Out storage can all be great uses of the gravity conveyor. Stac can help determine the pitch of your gravity conveyor and test your products to make sure our solution will achieve your needs.



SAFETY SOLUTIONS



SAFETY, SECURITY + SEPARATION

GUARD RAILING

Help protect your employees, products and your business with Guard Railing that keeps safety priority #1. Bolt-on or Lift Out options help streamline your facility flow, material protection and keep pedestrians separated from floor traffic. Powder coated in safety yellow and many quick ship custom sizes available.

PLATFORMS

Platforms and crossovers help tie together different areas of your facility inside and outside and allow you safe access to all areas where you need it. With ErectaStep® all parts are pre-engineered which means no fabrication is required. These products are made of modular lightweight aluminum components making it easy to assemble and reconfigure as your needs change.

OSHA compliant means that you know it will meet and exceed expectations.

WIRE PARTITIONS

Our partitions deliver a clean look while maintaining the ability to keep products secure and separated throughout your facility. Made of woven and welded wire that is paired with the heaviest assembly hardware in the industry, these partitions provide you the peace of mind that your area is secure. Options also include sheet metal, polycarbonate and welding curtains fully integrated into your solution.

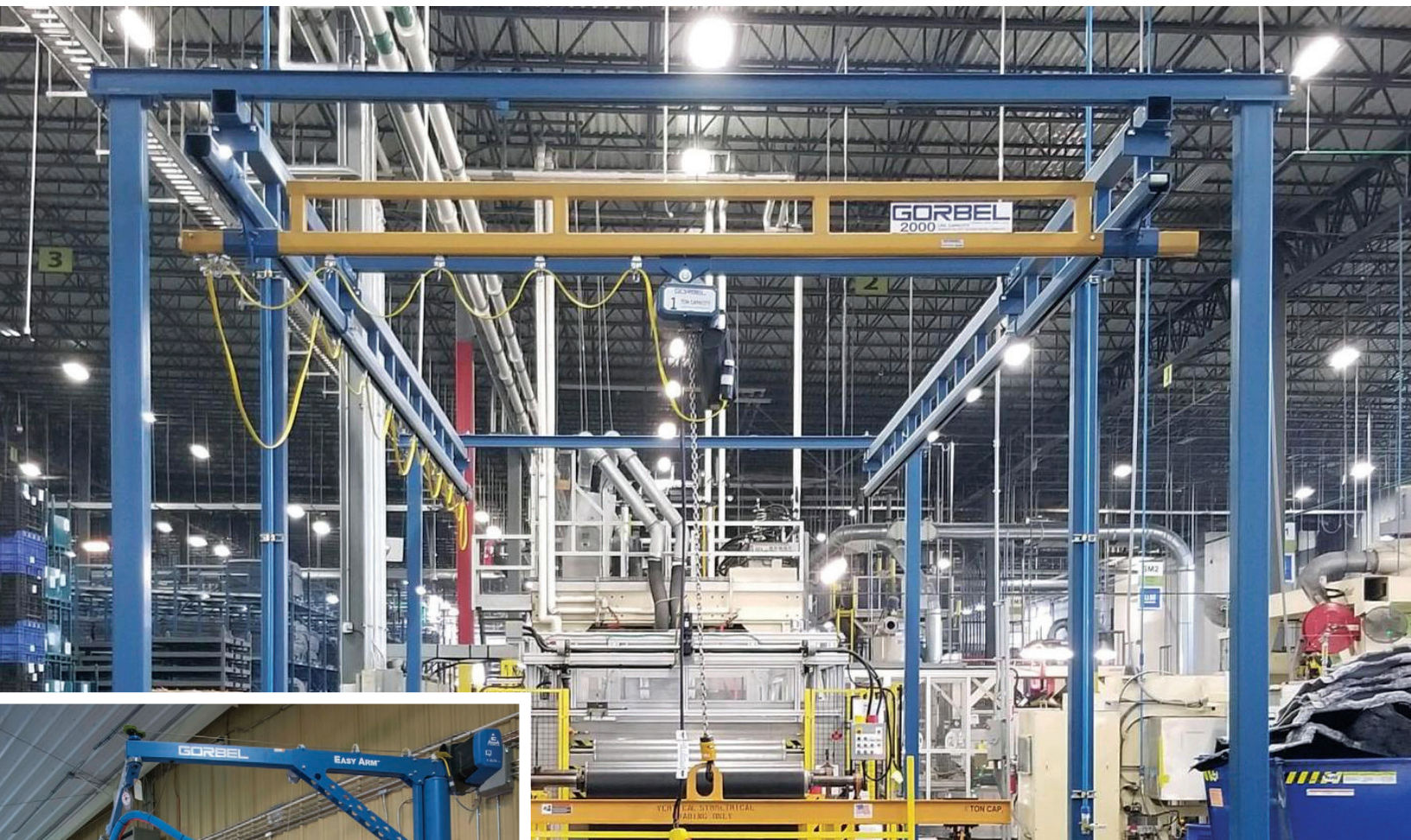
APPLICATIONS

- Tool Cribs
- Drivers Cages
- Security Lockers
- DEA Cages
- Server Cages
- Rack Back

OUR EXPERT INSTALLERS CAN HANDLE FULL ELECTRICAL AND MECHANICAL INSTALLATION OF THE MOST COMPLEX PROJECTS.

CRANES + HOISTS

Stac represents your leading Gorbel crane and engineered lifting solutions integrator. Allow us to design your bridge, gantry, jib, i-beam and tramrail crane applications. Workstation lifting solutions are often responsible for significant reduction on back related lifting injuries in the manufacturing and distribution industries.



GORBEL ERGONOMIC LIFTING

Look to Gorbel Ergonomic Lifting when you're looking for a turn-key, plug-and-play lifting solution. You get all the strength, precision, and speed of our patented G-Force® lifting technology, with the ability to lift and maneuver naturally, as if the device was an extension of your arms.

GORBEL
A CLASS ABOVE

LEARN MORE ABOUT OUR SOLUTIONS AT STACMH.COM

ERGONOMIC LIFTING

Lift tables, stackers, pallet positioners, and tilters provide ergonomic solutions that increase employees safety, speed and overall efficiencies. This focus on ergonomics and productivity drive technological investments in the positioning of product. Lift tables can solve hundreds of different applications in manufacturing, warehousing, and distributing facilities. Stac offers many brands and types of lift equipment.



APPLICATIONS

- Product Assembly
- Feeding/Offloading Conveyors
- Extreme Load Dimensions
- Bridging Levels
- Backsaver Lifts
- Heavy Duty Lifts
- Pneumatic Lifts
- Pallet Turntables
- Load Levelers

OUR EXPERT INSTALLERS CAN HANDLE FULL ELECTRICAL AND MECHANICAL INSTALLATION OF THE MOST COMPLEX PROJECTS.

HVLS

HIGH VOLUME LOW SPEED FANS

Fans have direct drive motors and cost less than a dollar a day to operate. With a 15 year warranty, providing air movement benefits in summer and winter, popularity is sky rocketing as companies take advantage of heating and air cost savings. Better comfortability in manufacturing and distribution facilities improves productivity.



**"ONE 20 FOOT FAN TYPICALLY MOVES
AROUND 125,000 CFM OF AIR"**

- PER A RECENT STUDY

BENEFITS

- Save up to 30% or more on your monthly energy bill
- Gearless Direct Drive eliminates up to 240lbs. of hanging weight
- Lowering the temperature by 8° may increase employee productivity up to 10%
- Best warranties in the industry



**DIRECT DRIVE MOTORS
COST LESS THAN
\$1 A DAY TO USE**

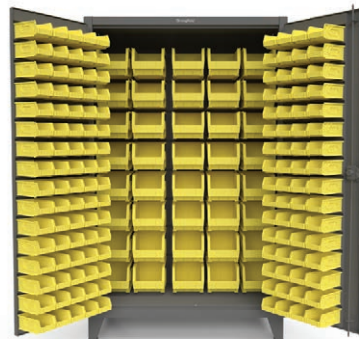
**1 HVLS
REPLACES
14 BARREL FANS**



LEARN MORE ABOUT OUR SOLUTIONS AT STACMH.COM

MISCELLANEOUS MATERIAL HANDLING

Stac is passionate about all things material handling! From strategic partnerships with the most respected sources for cabinets and drum handling, to lockers, line tape, matting and more. Our products help keep you safe, secure, and more efficient than ever before.



MORSE 
"The Specialist In Drum Handling Equipment"

StrongHold

OUR EXPERT INSTALLERS CAN HANDLE FULL ELECTRICAL AND MECHANICAL INSTALLATION OF THE MOST COMPLEX PROJECTS.

"It is hard to find integrators who do what they say they are going to do, and do it right. You guys have and are done a day early."

Senior Engineering Manager, Advics Manufacturing

A Few of Our Customers



More About Stac

Stac designs, implements, and installs turnkey material handling solutions that deliver increased safety, productivity, and efficiency results. Established in 2004, our passion for integration has created a winning culture to provide automated and general material handling solutions that are on time and budget. Our integration capabilities and engineering background, position us for technical solutions involving and implementing today's technology in manufacturing and distribution for a better tomorrow.

"We will look out for your best interests and our history of customer service speaks for itself." Kim Schroeder, CEO



stacmh.com | 866.634.3040